



energy consumption
3.2
kWh / day*

KILIMANJARO LIFE

93 × 93 × 37 in
1 reclining seat, 5 upright seats



Premium Edition

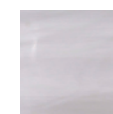
Net weight / Water volume	1001 lbs / 383 gallons
Frame	Wellis PolyStyrol (WPS)
Cabinet	LightSide™ UV-proof wood textured
Reinforcement	Poli-MAX™
Scandinavian insulation	Polyfoam 1.4 in
Total number of jets	59 jets
∞ Infinity jets	6
Min / Opt. power requirement	22A / 35A - 240V/60Hz
Pumps	1 × 3 HP + 1 × 3 HP double speed
Circulation pump	W-EC pump (0.25 kW)
W.O.W. system	electronic water diverter
Heater	4 kW
Control box / panel	Gecko (IN.YE-5) / SmartTouch
Auxiliary control panel	2 × 1 buttons
Water sanitization	Ozmix™ system (Ozone + mixer)
Cartridge filter	3 × MicroPlus antibacterial
Flat fountain jets	2 Lighted Fountain Jets
Waterfall	24" Lighted Waterfall
Light-zone system	Zone 1: Well Light with EvenLight Jets Zone 2: Edge Lighting Zone 3: Cabinet & Corner Lighting
Remote spa control	SmartPhone app with wifi connection
Thermo cover	standard - 3.5 in
W.I.S. Inline system	built-in water analyzer

Options

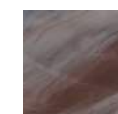
3 kW heat pump
Smart-In step prepared to house heat pump



Infinity foot massage

Foot, calf and thigh massage
in one reclining seat**ACRYLIC**

Sterling silver



Tuscan sun



Midnight canyon

SIDE COVER

brown



grey

* California Energy Commission data: water 102 °F, air 62 °F, filtering 1x2 hour. Based on Wellis measurements with heat pump.